

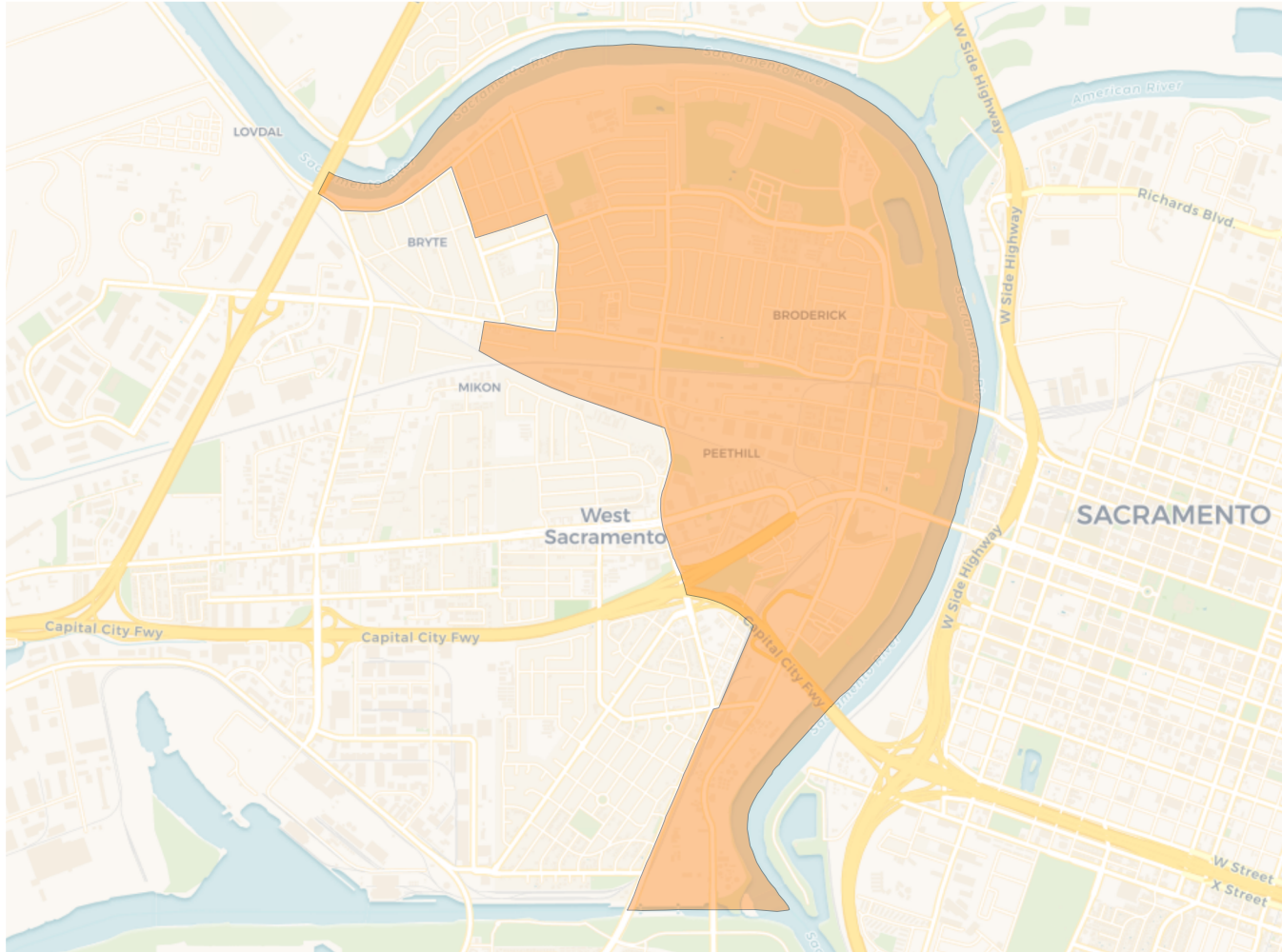
2020 Census

	A	B	C	D
Population	13,631	13,385	13,426	13,611
Deviation	118	-128	-87	98
Deviation %	0.9%	-0.9%	-0.6%	0.7%
Other	5,935	5,809	7,831	7,505
Other %	43.5%	43.4%	58.3%	55.1%
Latino	5,527	5,583	3,066	3,136
Latino %	40.5%	41.7%	22.8%	23.0%
Asian	1,464	1,303	2,135	2,238
Asian %	10.7%	9.7%	15.9%	16.4%
Black	705	690	394	732
Black %	5.2%	5.2%	2.9%	5.4%

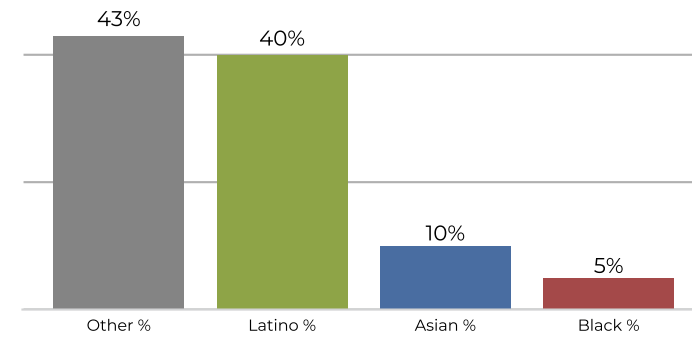
Citizen Voting Age Population (CVAP)

	A	B	C	D
Total CVAP	7,518	7,396	9,461	9,160
Other CVAP	4,121	4,106	6,399	6,018
Other CVAP %	54.8%	55.5%	67.6%	65.7%
Latino CVAP	2,114	2,014	1,495	1,519
Latino CVAP %	28.1%	27.2%	15.8%	16.6%
Asian CVAP	616	642	1,367	1,055
Asian CVAP %	8.2%	8.7%	14.4%	11.5%
Black CVAP	667	634	200	568
Black CVAP %	8.9%	8.6%	2.1%	6.2%

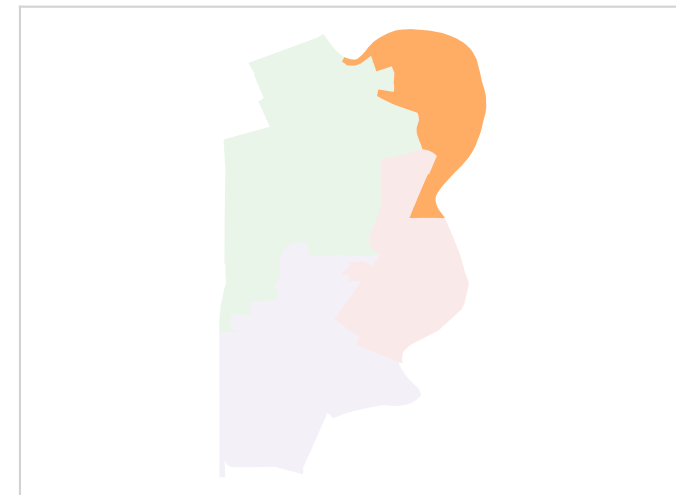
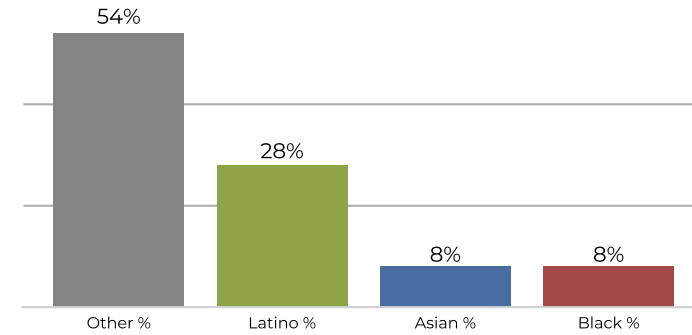
District A



2020 Census

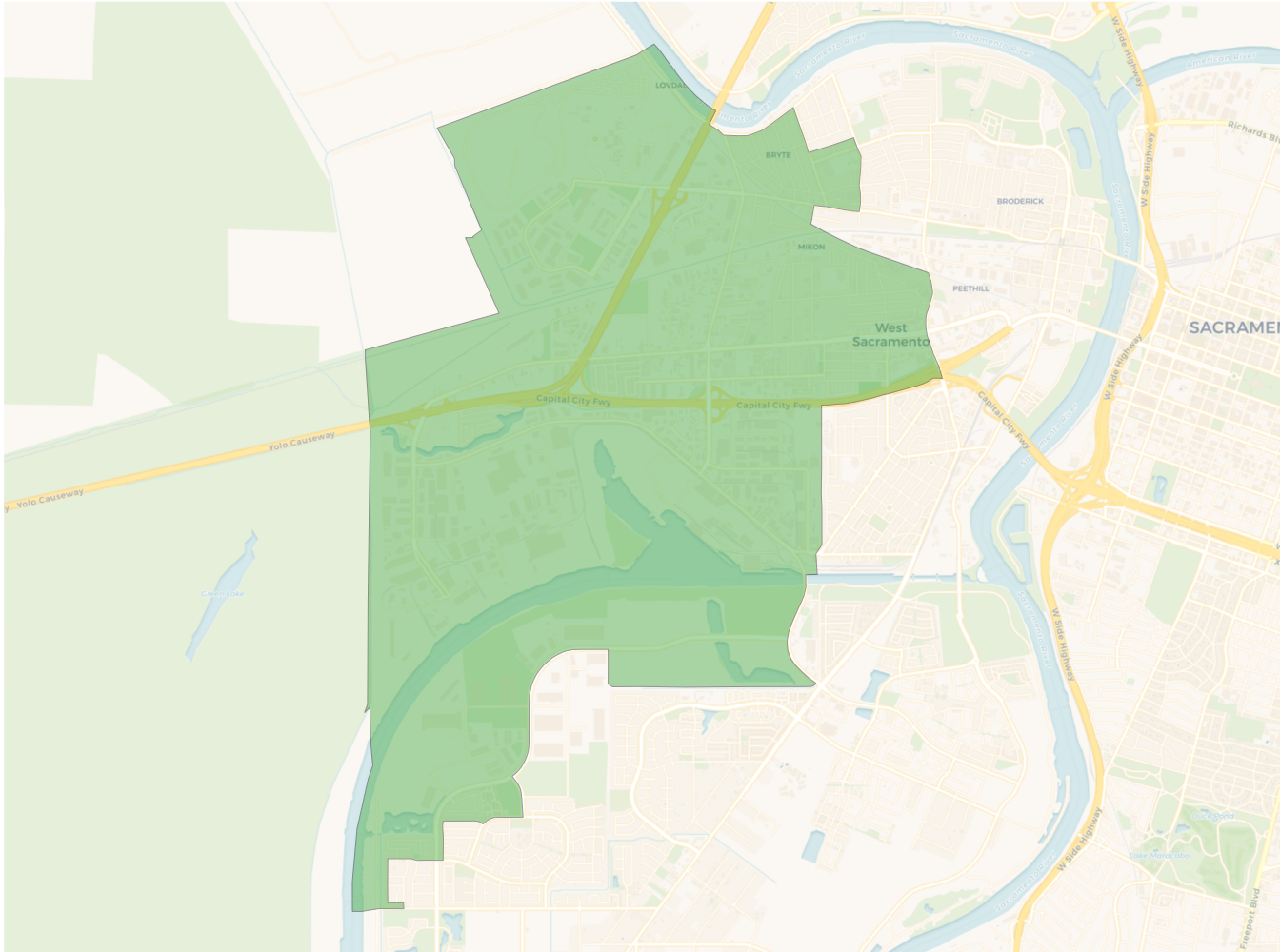


Citizen Voting Age Population

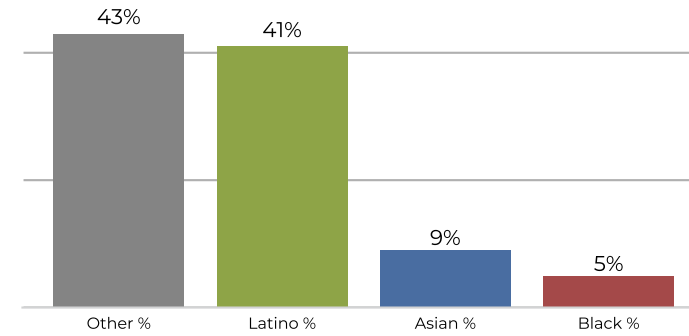


Population	Deviation	Deviation %	Other	Other %	Latino	Latino %	Asian	Asian %	Black	Black %
13,631	118	0.9%	5,935	43.5%	5,527	40.5%	1,464	10.7%	705	5.2%
Total CVAP	Other CVAP	Other CVAP %	Latino CVAP	Latino CVAP %	Asian CVAP	Asian CVAP %	Black CVAP	Black CVAP %		
7,518	4,121	54.8%	2,114	28.1%	616	8.2%	667	8.9%		

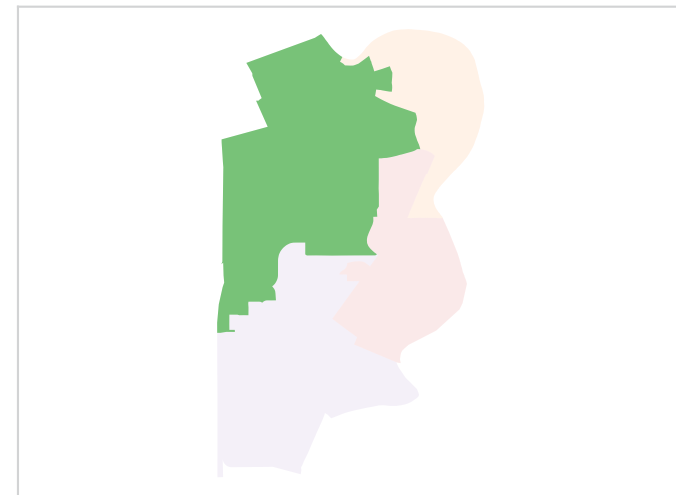
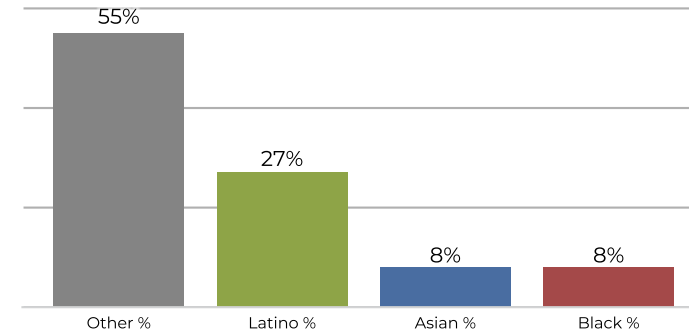
District B



2020 Census

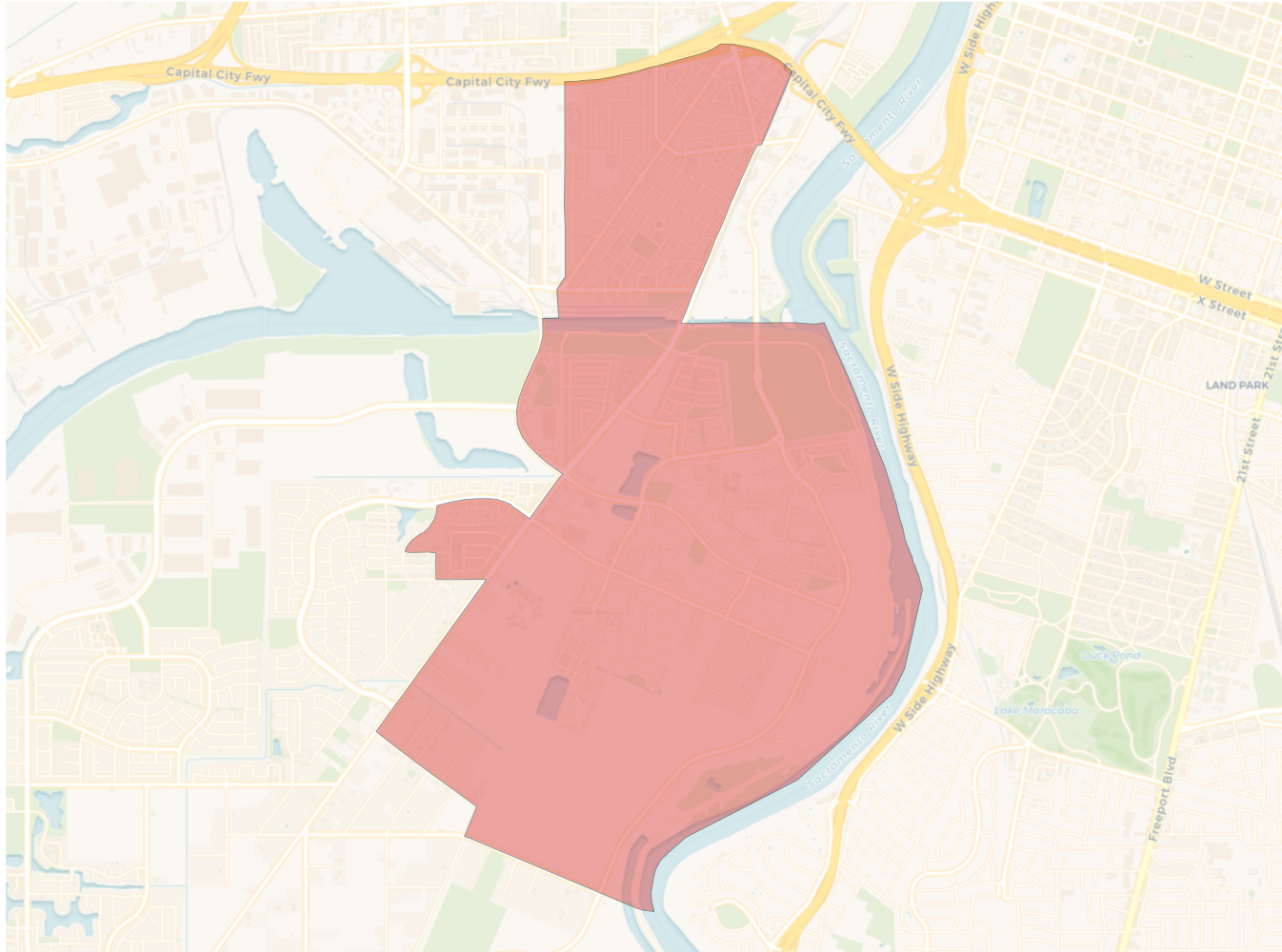


Citizen Voting Age Population

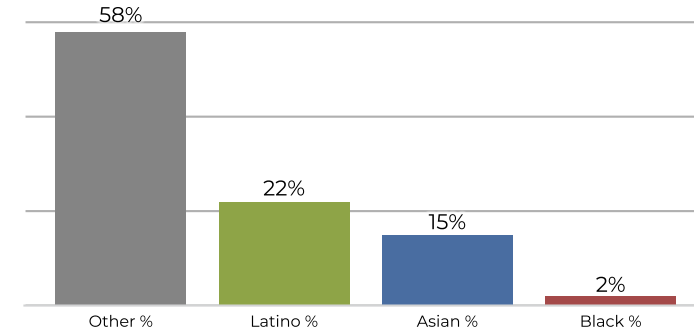


Population	Deviation	Deviation %	Other	Other %	Latino	Latino %	Asian	Asian %	Black	Black %
13,385	-128	-0.9%	5,809	43.4%	5,583	41.7%	1,303	9.7%	690	5.2%
Total CVAP	Other CVAP	Other CVAP %	Latino CVAP	Latino CVAP %	Asian CVAP	Asian CVAP %	Black CVAP	Black CVAP %		
7,396	4,106	55.5%	2,014	27.2%	642	8.7%	634	8.6%		

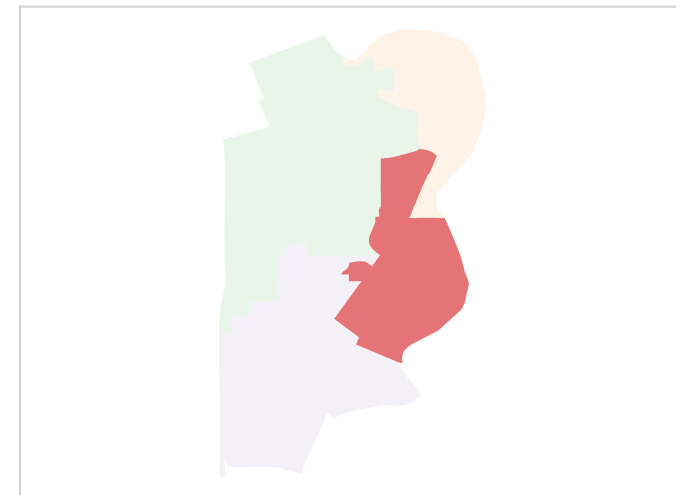
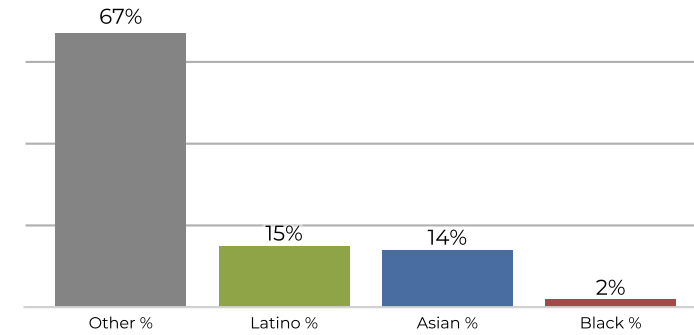
District C



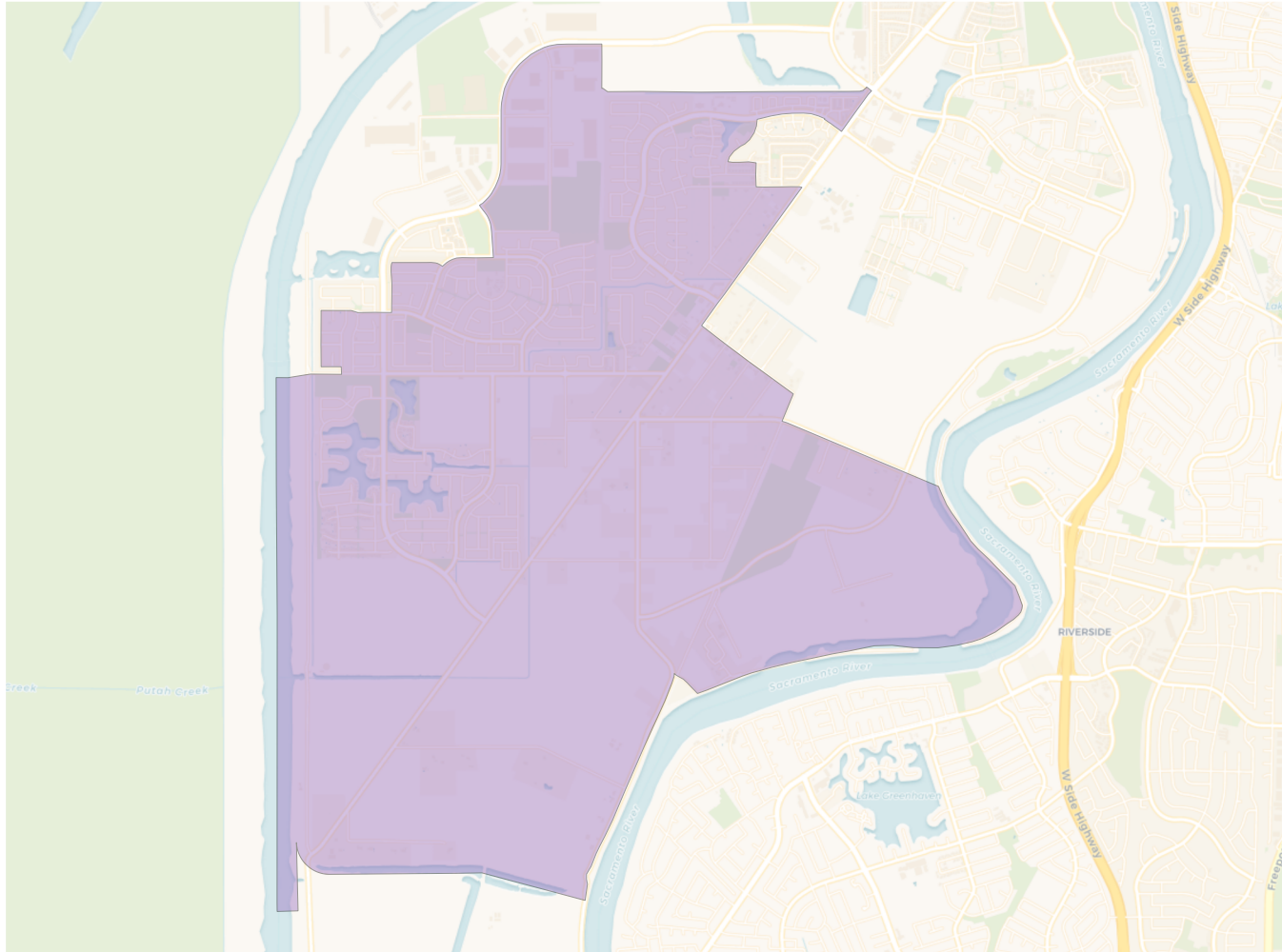
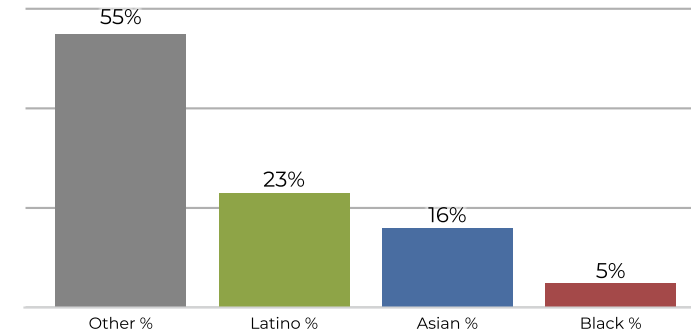
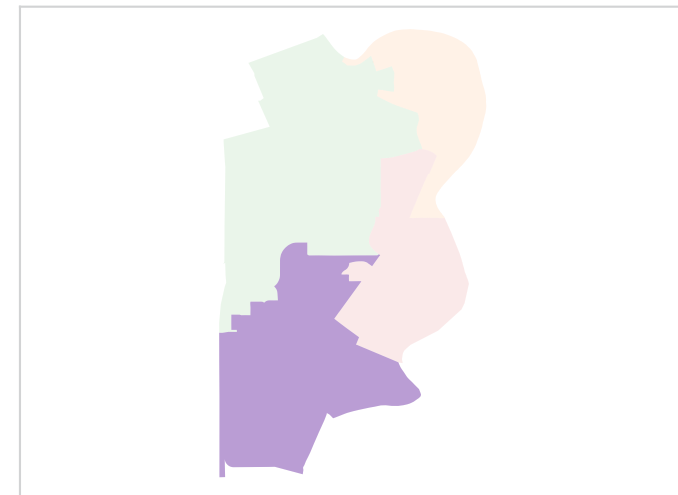
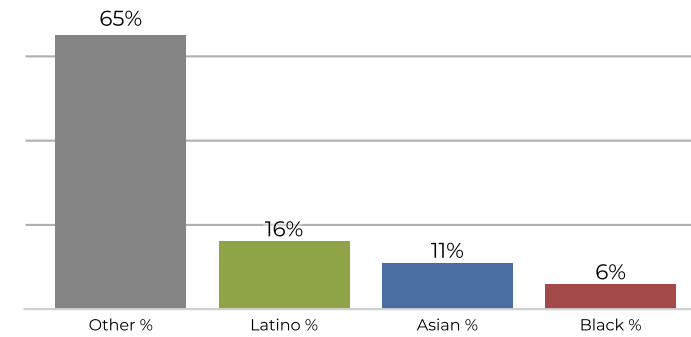
2020 Census



Citizen Voting Age Population



Population	Deviation	Deviation %	Other	Other %	Latino	Latino %	Asian	Asian %	Black	Black %
13,426	-87	-0.6%	7,831	58.3%	3,066	22.8%	2,135	15.9%	394	2.9%
Total CVAP	Other CVAP	Other CVAP %	Latino CVAP	Latino CVAP %	Asian CVAP	Asian CVAP %	Black CVAP	Black CVAP %		
9,461	6,399	67.6%	1,495	15.8%	1,367	14.4%	200	2.1%		

District D

2020 Census

Citizen Voting Age Population


Population	Deviation	Deviation %	Other	Other %	Latino	Latino %	Asian	Asian %	Black	Black %
13,611	98	0.7%	7,505	55.1%	3,136	23.0%	2,238	16.4%	732	5.4%
Total CVAP	Other CVAP	Other CVAP %	Latino CVAP	Latino CVAP %	Asian CVAP	Asian CVAP %	Black CVAP	Black CVAP %		
9,160	6,018	65.7%	1,519	16.6%	1,055	11.5%	568	6.2%		