

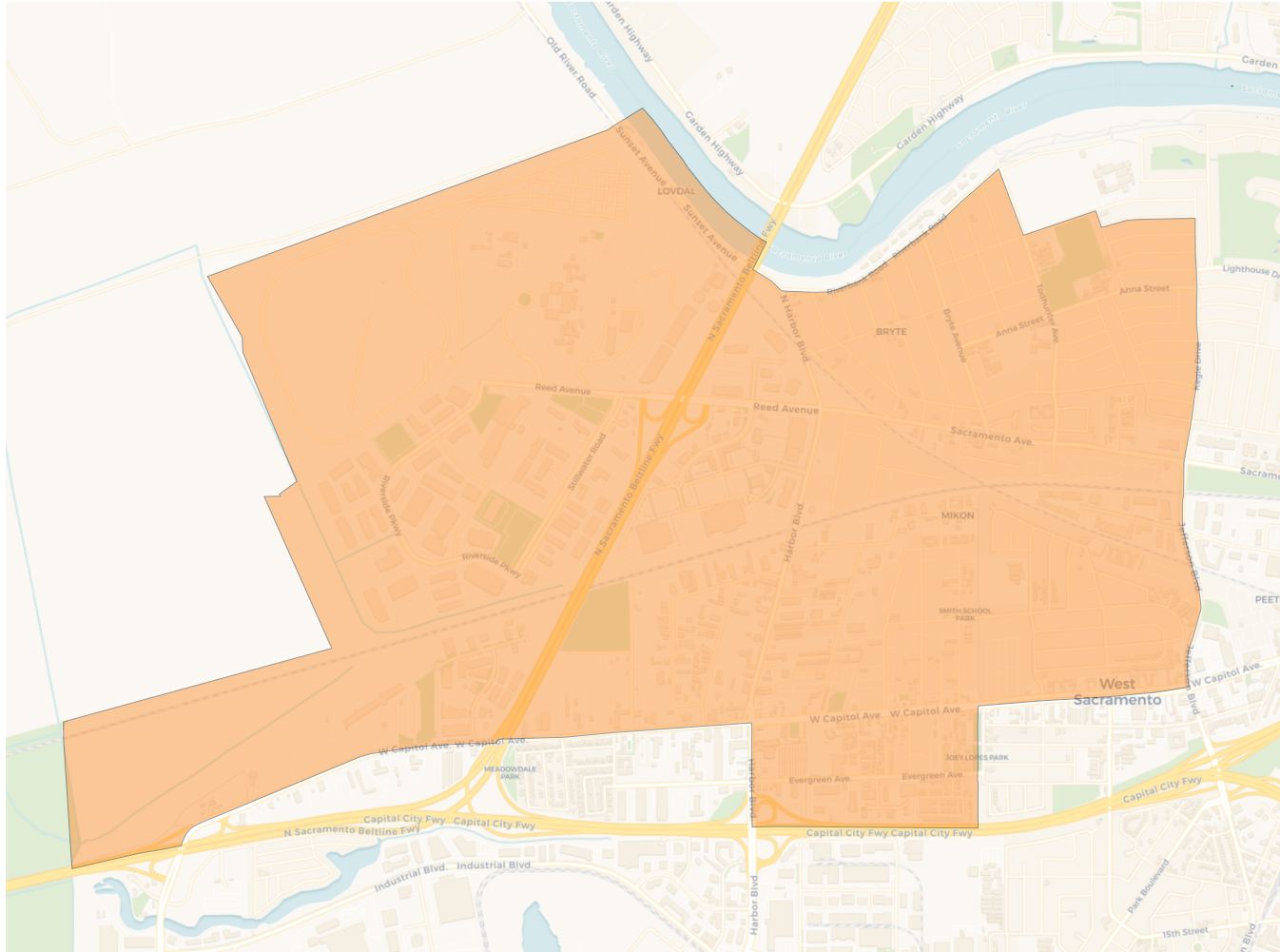
## 2020 Census

	1	2	3	4
Population	13,550	13,822	13,457	13,248
Deviation	31	303	-62	-271
Deviation %	0.2%	2.2%	-0.5%	-2.0%
Other	5,697	7,019	6,958	7,412
Other %	42.0%	50.8%	51.7%	55.9%
Latino	6,269	4,787	3,303	2,965
Latino %	46.3%	34.6%	24.5%	22.4%
Asian	1,121	1,297	2,356	2,370
Asian %	8.3%	9.4%	17.5%	17.9%
Black	463	719	840	501
Black %	3.4%	5.2%	6.2%	3.8%

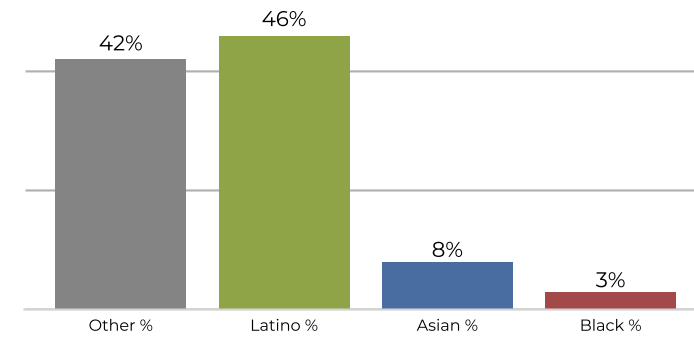
## Citizen Voting Age Population (CVAP)

	1	2	3	4
Total CVAP	7,310	9,084	8,370	8,780
Other CVAP	3,734	5,703	5,265	5,947
Other CVAP %	51.1%	62.8%	62.9%	67.7%
Latino CVAP	2,283	2,308	1,492	1,062
Latino CVAP %	31.2%	25.4%	17.8%	12.1%
Asian CVAP	624	529	1,065	1,462
Asian CVAP %	8.5%	5.8%	12.7%	16.7%
Black CVAP	669	544	548	309
Black CVAP %	9.2%	6.0%	6.5%	3.5%

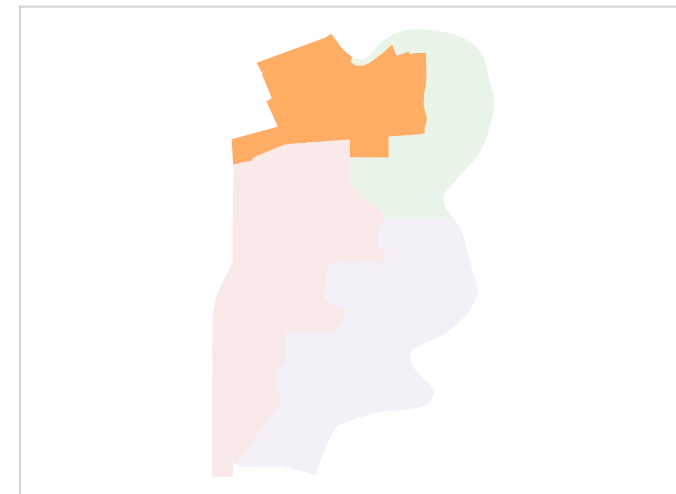
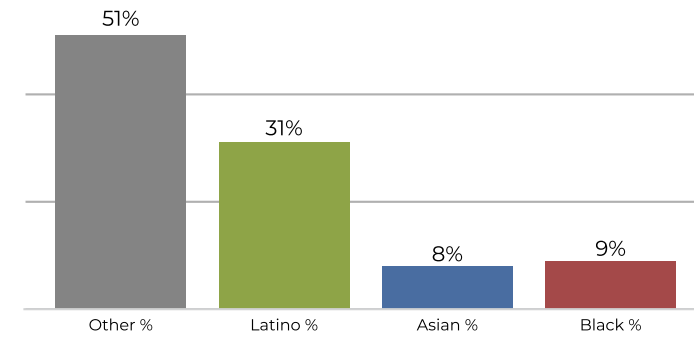
**District 1**



**2020 Census**



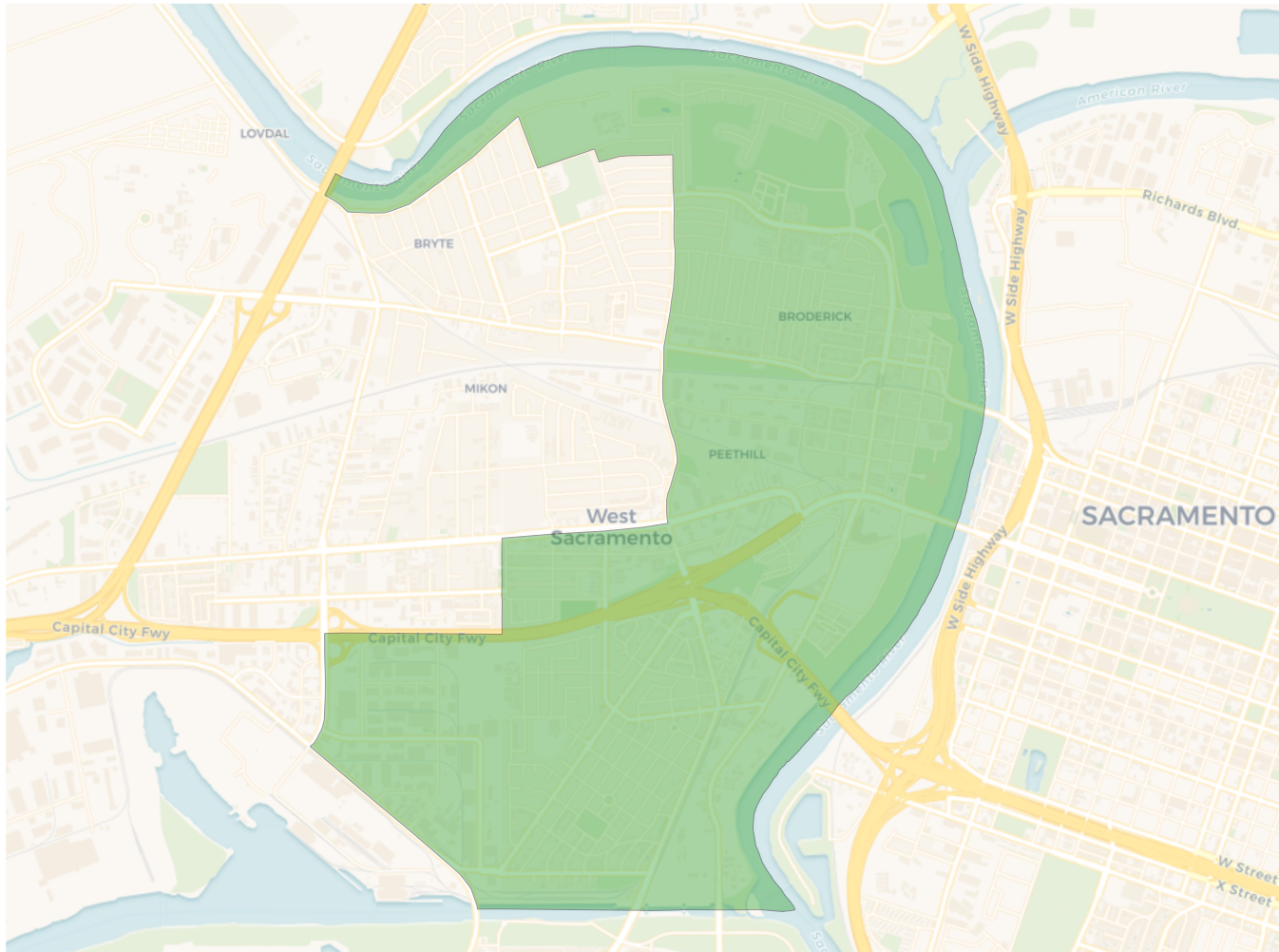
**Citizen Voting Age Population**



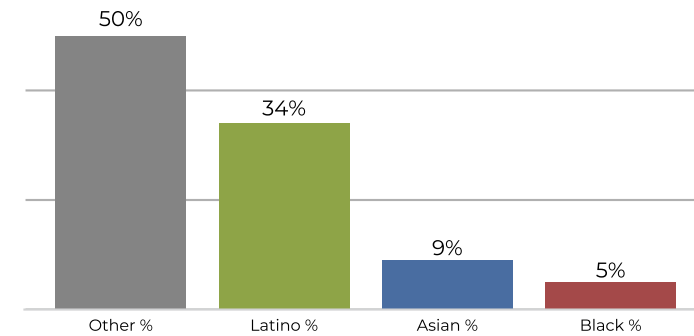
Population	Deviation	Deviation %	Other	Other %	Latino	Latino %	Asian	Asian %	Black	Black %
13,550	31	0.2%	5,697	42.0%	6,269	46.3%	1,121	8.3%	463	3.4%
Total CVAP	Other CVAP	Other CVAP %	Latino CVAP	Latino CVAP %	Asian CVAP	Asian CVAP %	Black CVAP	Black CVAP %		
7,310	3,734	51.1%	2,283	31.2%	624	8.5%	669	9.2%		



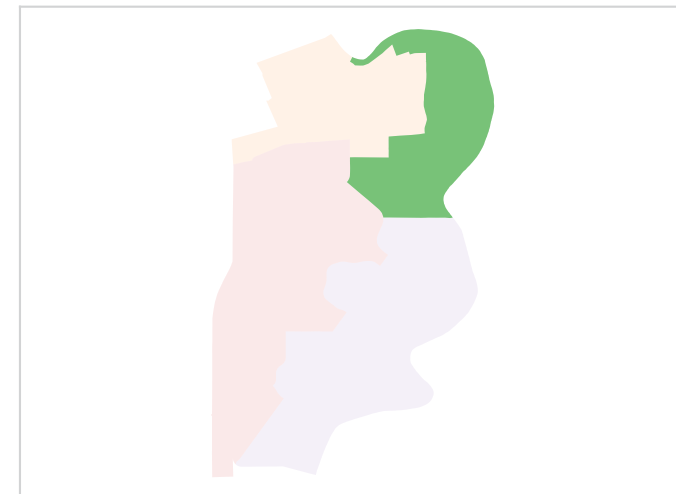
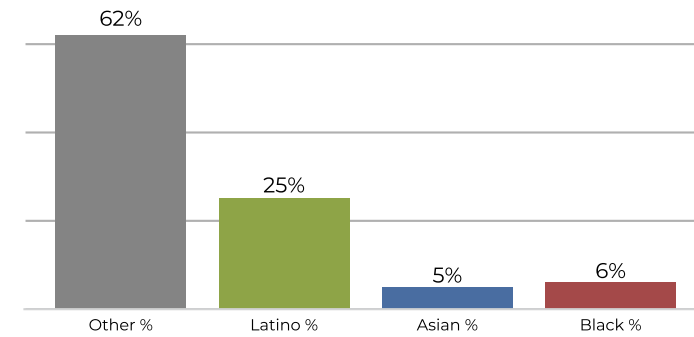
**District 2**



**2020 Census**



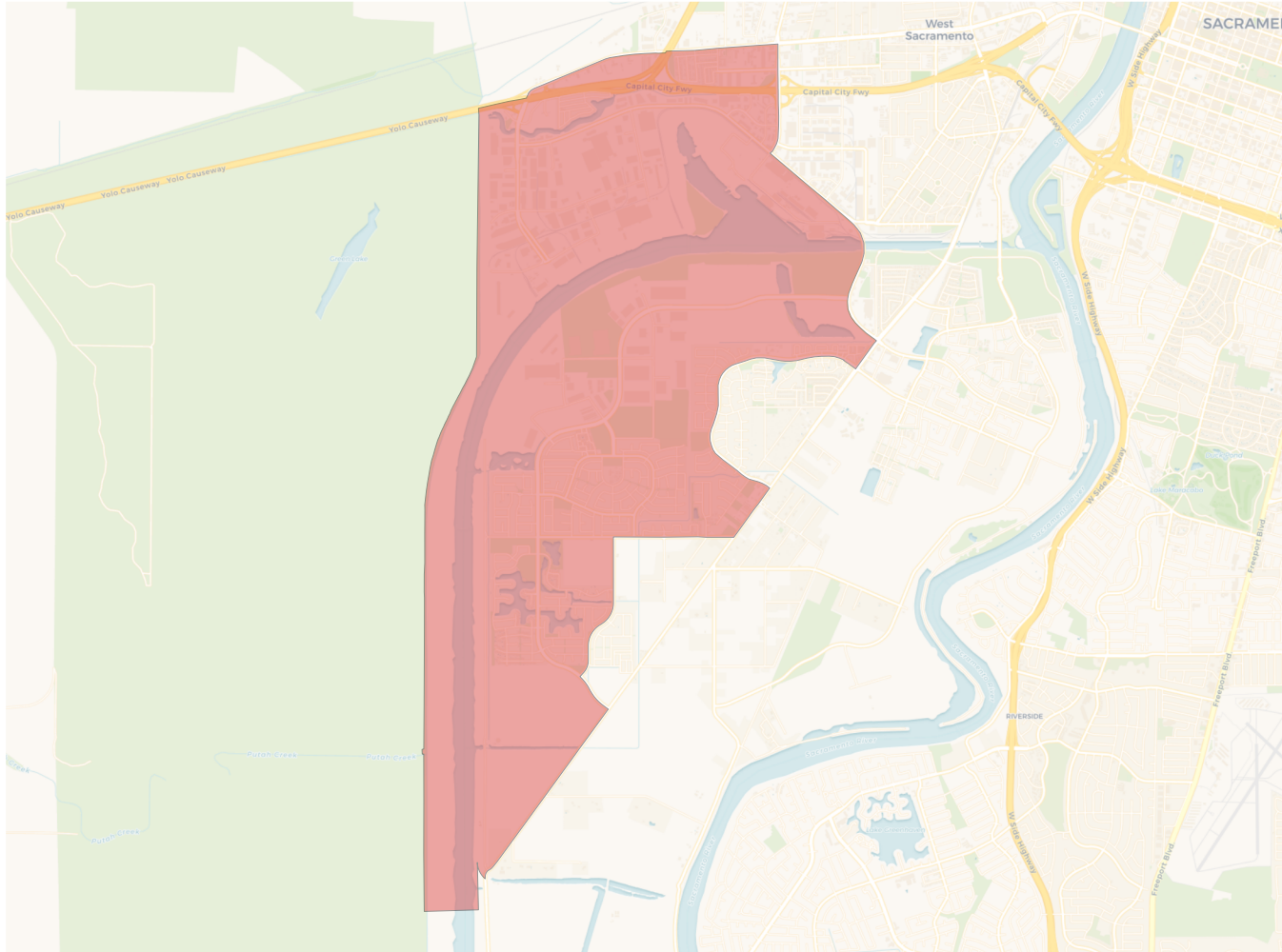
**Citizen Voting Age Population**



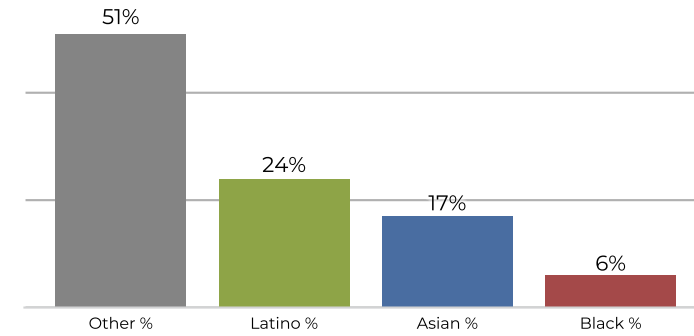
Population	Deviation	Deviation %	Other	Other %	Latino	Latino %	Asian	Asian %	Black	Black %
13,822	303	2.2%	7,019	50.8%	4,787	34.6%	1,297	9.4%	719	5.2%
Total CVAP	Other CVAP	Other CVAP %	Latino CVAP	Latino CVAP %	Asian CVAP	Asian CVAP %	Black CVAP	Black CVAP %		
9,084	5,703	62.8%	2,308	25.4%	529	5.8%	544	6.0%		



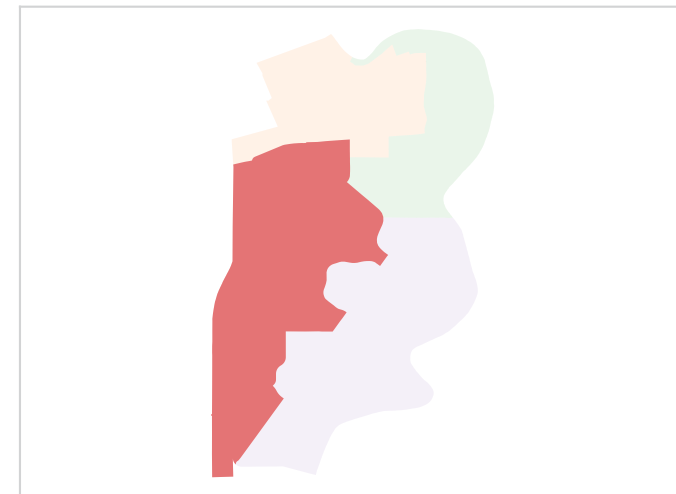
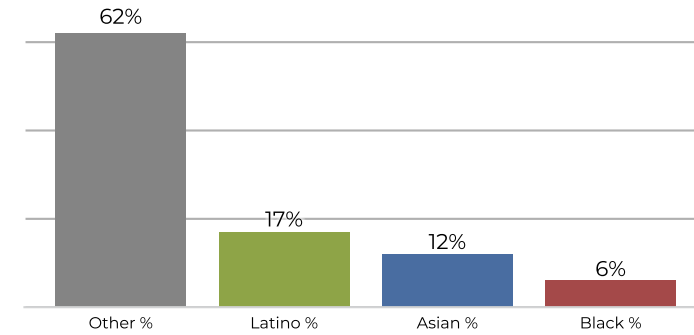
**District 3**



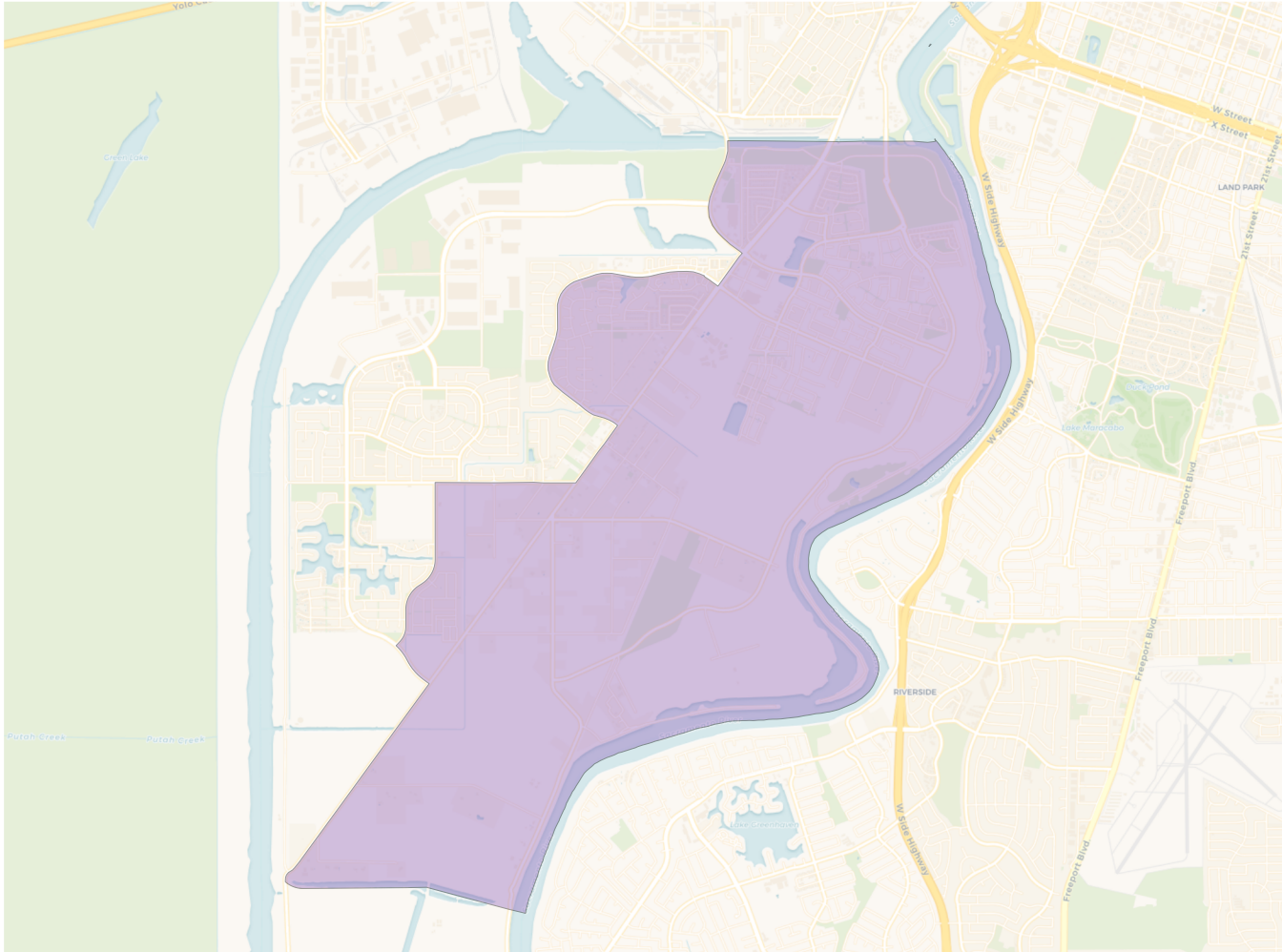
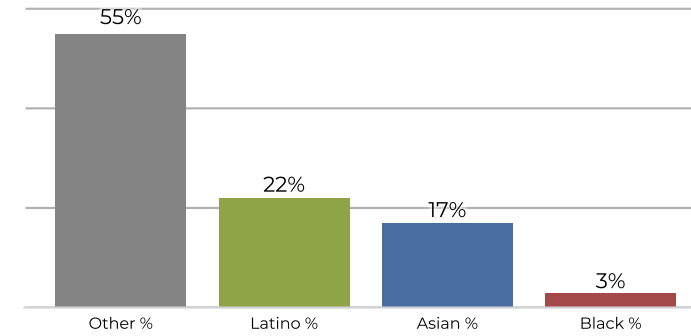
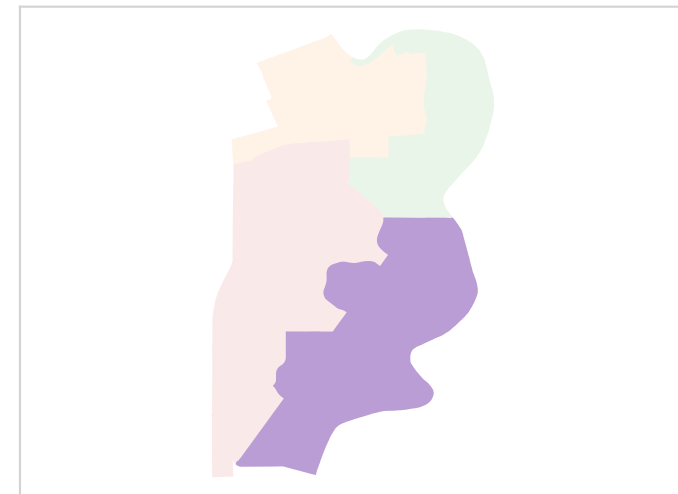
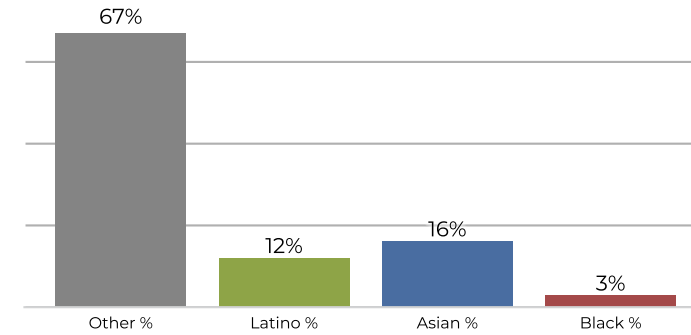
**2020 Census**



**Citizen Voting Age Population**



Population	Deviation	Deviation %	Other	Other %	Latino	Latino %	Asian	Asian %	Black	Black %
13,457	-62	-0.5%	6,958	51.7%	3,303	24.5%	2,356	17.5%	840	6.2%
Total CVAP	Other CVAP	Other CVAP %	Latino CVAP	Latino CVAP %	Asian CVAP	Asian CVAP %	Black CVAP	Black CVAP %		
8,370	5,265	62.9%	1,492	17.8%	1,065	12.7%	548	6.5%		

**District 4**

**2020 Census**

**Citizen Voting Age Population**


Population	Deviation	Deviation %	Other	Other %	Latino	Latino %	Asian	Asian %	Black	Black %
13,248	-271	-2.0%	7,412	55.9%	2,965	22.4%	2,370	17.9%	501	3.8%
Total CVAP	Other CVAP	Other CVAP %	Latino CVAP	Latino CVAP %	Asian CVAP	Asian CVAP %	Black CVAP	Black CVAP %		
8,780	5,947	67.7%	1,062	12.1%	1,462	16.7%	309	3.5%		